



Children's



Endeavour



Trust

# Exclusions Policy

The Children's Endeavour Trust comprises of:

- Abbot's Hall Community Primary School
- Bosmere Community Primary School
- Broke Hall Community Primary School
- Chilton Community Primary School
- Combs Ford Primary School
- Freeman Community Primary School
- Springfield Junior School

## Document Control

<i>Version</i>	<i>Date</i>	<i>Author</i>	<i>Comments</i>
<i>Issue 1</i>	<b>Apr 2020</b>	<b>CEO</b>	<i>Based on Key Document</i>

**Owner:** CEO

**Approver:** Trust Board

**Statutory Policy:** Yes

**Review Cycle:** Annually

**Approval date:** 15<sup>th</sup> July 2020

## Contents

1. Aims .....	3
2. Legislation and Statutory Guidance .....	3
3. The Decision to Exclude .....	3
4. Definition .....	4
5. Roles and Responsibilities .....	4
6. Considering the Reinstatement of a Pupil .....	5
7. An Independent Review .....	6
8. School Registers .....	7
9. Returning from a Fixed-Term Exclusion.....	7
10. Monitoring Arrangements.....	7
Appendix 1: Independent Review Panel Training .....	8
Appendix 2: Exclusion Process.....	9
Appendix 2: Exclusion Responsibilities Matrix .....	10

## 1. Aims

Our schools aims to ensure that:

- The exclusions process is applied fairly and consistently
- The exclusions process is understood by trustees, governors, staff, parents and pupils
- Pupils in school are safe and happy
- Pupils do not become NEET (not in education, employment or training)

This exclusions policy is linked to our Schools' Behaviour Policies

## 2. Legislation and Statutory Guidance

This policy is based on statutory guidance from the Department for Education: Exclusion from maintained schools, academies and pupil referral units (PRUs) in England.

It is based on the following legislation, which outline schools' powers to exclude pupils:

- Section 52 of the Education Act 2002, as amended by the Education Act 2011
- The School Discipline (Pupil Exclusions and Reviews) (England) Regulations 2012
- Sections 64-68 of the School Standards and Framework Act 1998
- In addition, the policy is based on:
- Part 7, chapter 2 of the Education and Inspections Act 2006, which looks at parental responsibility for excluded pupils
- Section 579 of the Education Act 1996, which defines 'school day'
- The Education (Provision of Full-Time Education for Excluded Pupils) (England) Regulations 2007, as amended by The Education (Provision of Full-Time Education for Excluded Pupils) (England) (Amendment) Regulations 2014

This policy complies with our funding agreement.

## 3. The Decision to Exclude

Only the headteacher, acting headteacher or his/her designate (if he/she is absent) can exclude a pupil from school. A permanent exclusion will be taken as a last resort.

Our schools are aware that off-rolling is unlawful. Ofsted defines off-rolling as:

“...the practice of removing a pupil from the school roll without a formal, permanent exclusion or by encouraging a parent to remove their child from the school roll, when the removal is primarily in the interests of the school rather than in the best interests of the pupil.”

We are committed to following all statutory exclusions procedures to ensure that every child receives an education in a safe and caring environment.

A decision to exclude a pupil will be taken only:

- In response to serious or persistent breaches of the school's behaviour policy, **and**
- If allowing the pupil to remain in school would seriously harm the education or welfare of others

Before deciding whether to exclude a pupil, either permanently or for a fixed period, the headteacher will:

- Consider all the relevant facts and evidence, including whether the incident(s) leading to the exclusion were provoked
- Allow the pupil to give their version of events
- Consider if the pupil has special educational needs (SEN)

## **4. Definition**

For the purposes of exclusions, school day is defined as any day on which there is a school session. Therefore, INSET or staff training days do not count as a school day.

## **5. Roles and Responsibilities**

### **5.1 The Headteacher**

#### **Informing parents**

The headteacher will immediately provide the following information, in writing, to the parents of an excluded pupil:

- The reason(s) for the exclusion
- The length of a fixed-term exclusion or, for a permanent exclusion, the fact that it is permanent
- Information about parents' right to make representations about the exclusion to the governing board and how the pupil may be involved in this
- Where there is a legal requirement for the governing board to meet to consider the reinstatement of a pupil, and that parents have a right to attend a meeting, be represented at a meeting (at their own expense) and to bring a friend

The headteacher will also notify parents by the end of the afternoon session on the day their child is excluded that for the first 5 school days of an exclusion, or until the start date of any alternative provision where this is earlier, parents are legally required to ensure that their child is not present in a public place during school hours without a good reason. Parents may be given a fixed penalty notice or prosecuted if they fail to do this.

If alternative provision is being arranged, the following information will be included when notifying parents of an exclusion:

- The start date for any provision of full-time education that has been arranged
- The start and finish times of any such provision, including the times for morning and afternoon sessions, where relevant
- The address at which the provision will take place
- Any information required by the pupil to identify the person they should report to on the first day

Where this information on alternative provision is not reasonably ascertainable by the end of the afternoon session, it may be provided in a subsequent notice, but it will be provided no later than 48 hours before the provision is due to start. The only exception to this is where alternative provision is to be provided before the sixth day of an exclusion, in which case the information can be provided with less than 48 hours' notice with parents' consent.

#### **Informing the governing board and local authority**

The headteacher will immediately notify the CEO, governing board and the local authority (LA) of:

- A permanent exclusion, including when a fixed-period exclusion is made permanent
- Exclusions which would result in the pupil being excluded for more than 5 school days (or more than 10 lunchtimes) in a term
- Exclusions which would result in the pupil missing a public examination

For a permanent exclusion, if the pupil lives outside the LA in which the school is located, the headteacher will also immediately inform the pupil's 'home authority' of the exclusion and the reason(s) for it without delay.

For all other exclusions, the headteacher will notify the CEO and governing body once a term.

## 5.2 The Governing Body

Responsibilities regarding exclusions are delegated to the local governing bodies.

The Governing Bodies will establish a Discipline Committees of three members who must meet to:

- a. Consider the circumstances in which the pupil was excluded;
- b. Consider any representations about the exclusion made by the parent
- c. Consider whether the pupil should be reinstated immediately, reinstated by a particular date or not reinstated (see section 6).

## 5.3 The Local Authority

For permanent exclusions, the Local Authority is responsible for arranging suitable full-time education to begin no later than the sixth day of the exclusion.

## 6. Considering the Reinstatement of a Pupil

The Discipline Committees of the Local Governing Bodies will consider the reinstatement of an excluded pupil within 15 school days of receiving the notice of the exclusion if:

- The exclusion is permanent
- It is a fixed-term exclusion which would bring the pupil's total number of school days of exclusion to more than 15 in a term
- It would result in a pupil missing a public examination

If requested to do so by parents, Discipline Committees will consider the reinstatement of an excluded pupil within 50 school days of receiving notice of the exclusion if the pupil would be excluded from school for more than 5 school days, but less than 15, in a single term.

Where an exclusion would result in a pupil missing a public examination, Discipline Committees will consider the reinstatement of the pupil before the date of the examination. If this is not practicable, the Discipline Committees will consider the exclusion and decide whether or not to reinstate the pupil.

Discipline Committees can either:

- Decline to reinstate the pupil, or
- Direct the reinstatement of the pupil immediately, or on a particular date

In reaching a decision, Discipline Committees will consider whether the exclusion was lawful, reasonable and procedurally fair and whether the headteacher followed their legal duties. They will decide whether or not a fact is true 'on the balance of probabilities', which differs from the criminal standard of 'beyond reasonable doubt', as well as any evidence that was presented in relation to the decision to exclude.

Minutes will be taken of the meeting, and a record of evidence considered kept. The outcome will also be recorded on the pupil's educational record.

Discipline Committees will notify, in writing, the headteacher, parents and the LA of its decision, along with reasons for its decision, without delay.

Where an exclusion is permanent, Discipline Committees' decisions will also include the following:

- The fact that it is permanent
- Notice of parents' right to ask for the decision to be reviewed by an independent review panel, and:
  - The date by which an application for an independent review must be made
  - The name and address to whom an application for a review should be submitted
  - That any application should set out the grounds on which it is being made and that, where appropriate, reference to how the pupil's SEN are considered to be relevant to the exclusion
  - That, regardless of whether the excluded pupil has recognised SEN, parents have a right to require the Trust to appoint an SEN expert to attend the review
  - Details of the role of the SEN expert and that there would be no cost to parents for this appointment
  - That parents must make clear if they wish for an SEN expert to be appointed in any application for a review
  - That parents may, at their own expense, appoint someone to make written and/or oral representations to the panel, and parents may also bring a friend to the review
- That if parents believe that the exclusion has occurred as a result of discrimination, they may make a claim under the Equality Act 2010 to the first-tier tribunal (special educational needs and disability), in the case of disability discrimination, or the county court, in the case of other forms of discrimination. A claim of discrimination made under these routes should be lodged within 6 months of the date on which the discrimination is alleged to have taken place

## **7. An Independent Review**

If parents apply for an independent review, the Trust will arrange for an independent panel to review the decision of the governing board not to reinstate a permanently excluded pupil.

Applications for an independent review must be made within 15 school days of notice being given to the parents by Discipline Committee of its decision to not reinstate a pupil.

A panel of 3 or 5 members will be constituted with representatives from each of the categories below. Where a 5-member panel is constituted, 2 members will come from the school governors category and 2 members will come from the headteacher category.

- A lay member to chair the panel who has not worked in any school in a paid capacity, disregarding any experience as a school governor or volunteer
- School governors who have served as a governor for at least 12 consecutive months in the last 5 years, provided they have not been teachers or headteachers during this time
- Headteachers or individuals who have been a headteacher within the last 5 years

A person may not serve as a member of a review panel if they:

- Are a [member/director] of the [LA/academy trust], or governing board of the excluding school
- Are the headteacher of the excluding school, or have held this position in the last 5 years

- Are an employee of the Trust, or the governing board, of the excluding school (unless they are employed as a headteacher at another school)
- Have, or at any time have had, any connection with the Trust, school, governing board, parents or pupil, or the incident leading to the exclusion, which might reasonably be taken to raise doubts about their impartiality
- Have not had the required training within the last 2 years (see appendix 1 for what training must cover)

A clerk will be appointed to the panel.

The independent panel will decide one of the following:

- Uphold the governing board's decision
- Recommend that the governing board reconsiders reinstatement
- Quash the governing board's decision and direct that they reconsider reinstatement (only when the decision is judged to be flawed)

The panel's decision can be decided by a majority vote. In the case of a tied decision, the chair has the casting vote.

## 8. School Registers

A pupil's name will be removed from the school admissions register if:

- 15 school days have passed since the parents were notified of the exclusion panel's decision to not reinstate the pupil and no application has been made for an independent review panel, or
- The parents have stated in writing that they will not be applying for an independent review panel

Where an application for an independent review has been made, the governing board will wait until that review has concluded before removing a pupil's name from the register.

Where alternative provision has been made for an excluded pupil and they attend it, code B (education off-site) or code D (dual registration) will be used on the attendance register.

Where excluded pupils are not attending alternative provision, code E (absent) will be used.

## 9. Returning from a Fixed-Term Exclusion

Following a fixed-term exclusion, a re-integration meeting will be held involving the pupil, parents, a member of senior staff and other staff, where appropriate.

The following measures may be implemented when a pupil returns from a fixed-term exclusion: The points below are suggestions only and should be adapted to your school's specific circumstances.

- Agreeing a behaviour contract
- Putting a pupil 'on report'

## 10. Monitoring Arrangements

The headteachers monitor the number of exclusions every term and reports back to the Local Governing body and CEO. They also liaise with the local authority to ensure suitable full-time education for excluded pupils.

## Appendix 1: Independent Review Panel Training

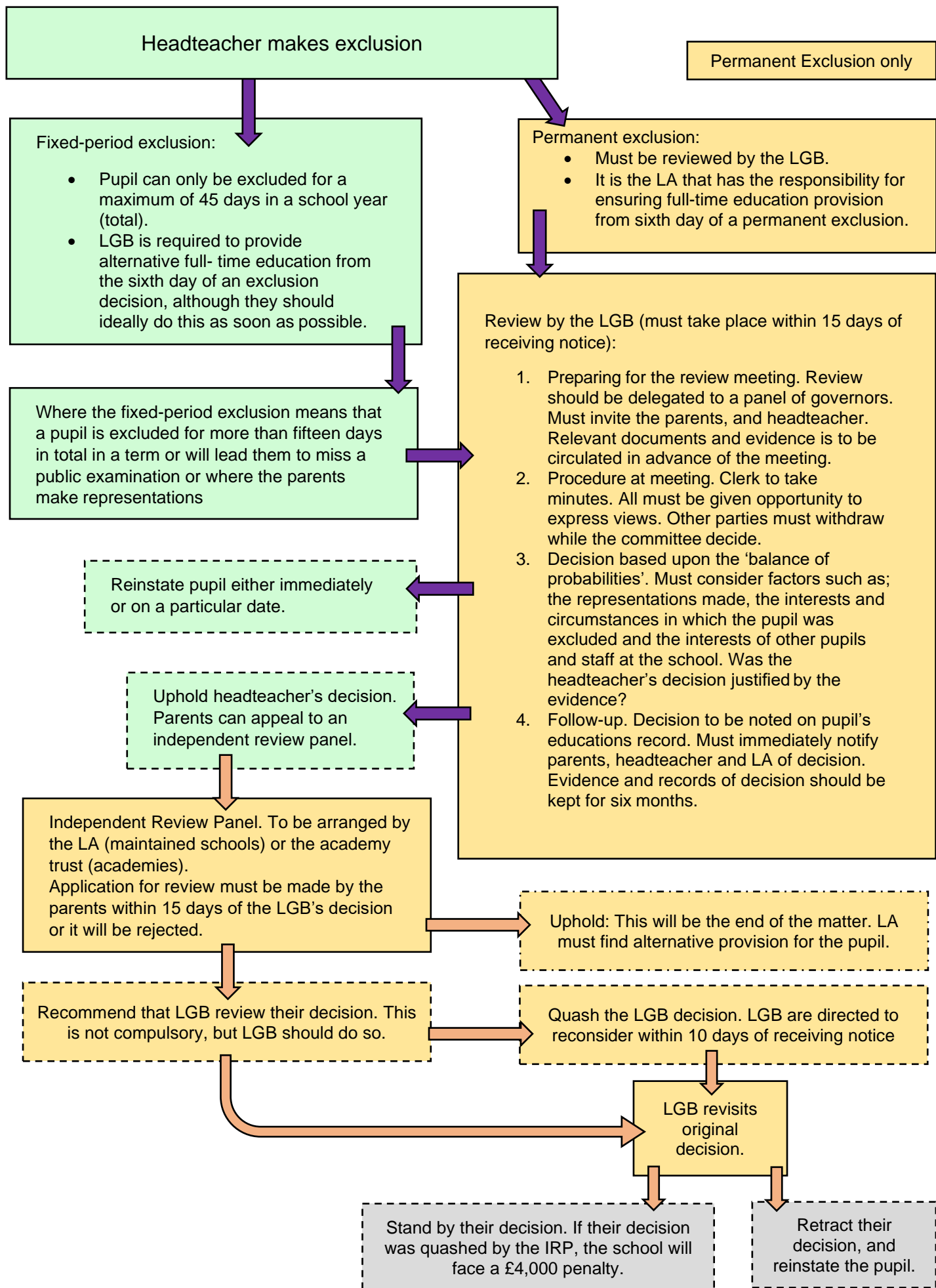
The Trust must ensure that all members of an independent review panel and clerks have received training within the 2 years prior to the date of the review.

Training must have covered:

- The requirements of the primary legislation, regulations and statutory guidance governing exclusions, which would include an understanding of how the principles applicable in an application for judicial review relate to the panel's decision making
- The need for the panel to observe procedural fairness and the rules of natural justice
- The role of the chair and the clerk of a review panel
- The duties of headteachers, governing boards and the panel under the Equality Act 2010
- The effect of section 6 of the Human Rights Act 1998 (acts of public authorities unlawful if not compatible with certain human rights) and the need to act in a manner compatible with human rights protected by that Act



## Appendix 2: Exclusion Process



## Appendix 2: Exclusion Responsibilities Matrix

Length of the exclusion	Will the exclusion amount to more than 15 days in a single term?	Who to inform?	Is an automatic LGB review required?	Can parents make representations to the LGB?	Time limit for considering representations	LGB actions and limitations
Less than 5 days	No	Parent – immediately LGB & LA – once a term	No	Yes, written. The LGB is not required to meet with the parents.	No specified time limit	LGB must consider parents' representations. They cannot overturn the HT's decision or remove the exclusion from the behavior record but can place a note on the student's record.
	Yes	The parents, the LGB, CEO and the LA immediately.	Yes	Yes, either written, or at a meeting of the LGB to review the exclusion decision.	15 days	LGB can determine whether the HT's decision was justified, lawful and procedurally correct. Can reinstate pupil immediately or on a given date. While the LGB can note their decision on the pupil's record, they cannot remove the original exclusion decision.
More than 5 days but less than 15 days	No		No	Yes. LGB must meet with parents to consider representations if parents request it	50 days	
	Yes		Yes	Yes, either written, or at a meeting of the LGB to review the exclusion decision.	15 days	
More than 15 days	Yes		Yes	Yes, either written, or at a meeting of the LGB to review the exclusion decision.	15 days	
Permanent	N/A		Yes	Yes, either written, or at a meeting of the LGB to review the exclusion decision.	15 days	
Any exclusion that causes the pupil to miss a public exam or national curriculum test.	N/A		Yes	Yes	15 – LGB must endeavor to meet before the date of the examination.	